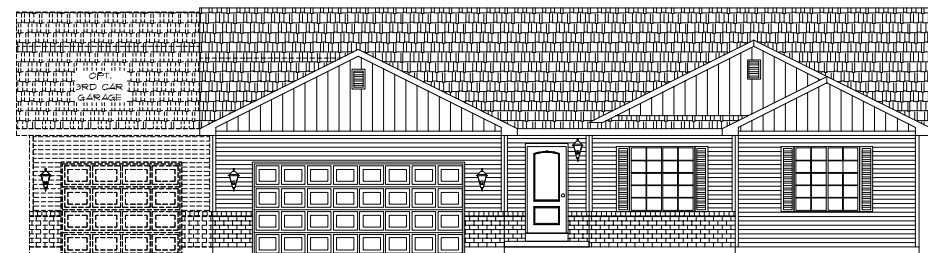


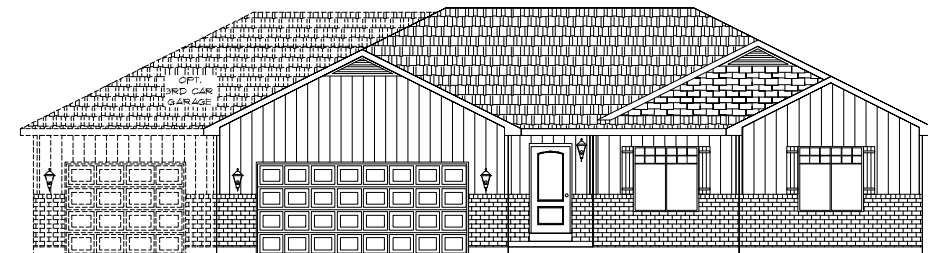


ELEVATION "B"

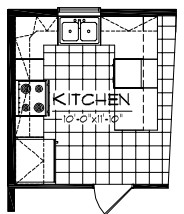
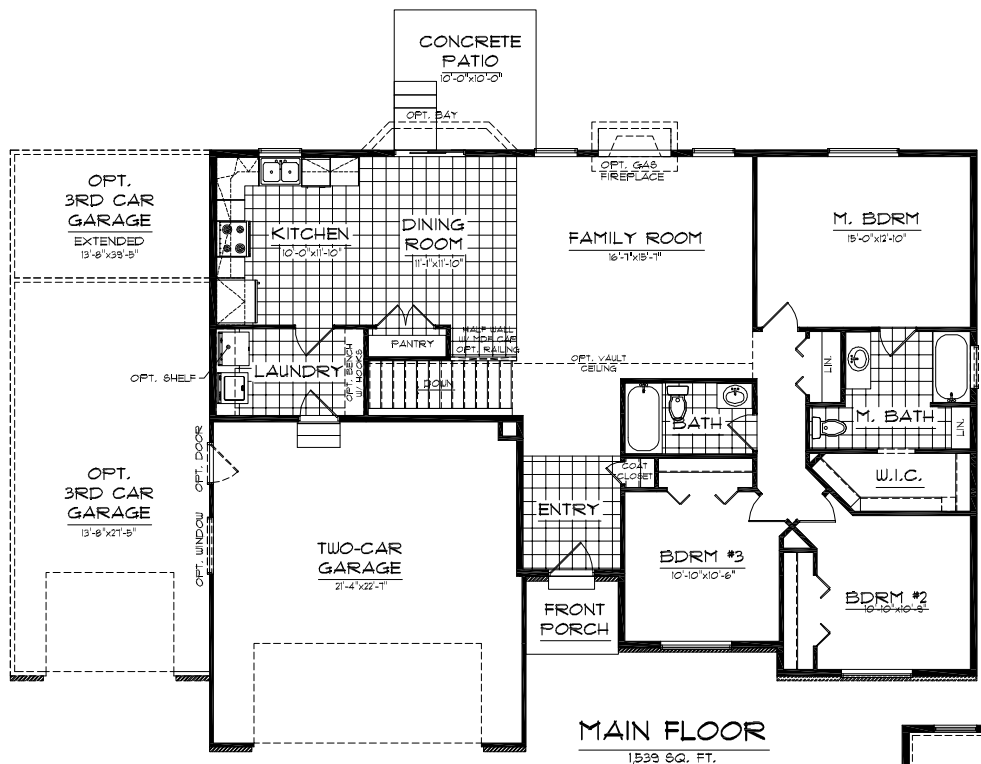
- 1,538 sq. FT. FINISHED
- 1,510 sq. FT. UNFINISHED BASEMENT
- 3,048 sq. FT. TOTAL W/ BASEMENT
- 3 BEDROOMS
- 2 BATH
- 54'-0" WIDE x 42'-4" DEEP



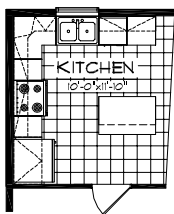
ELEVATION "A"



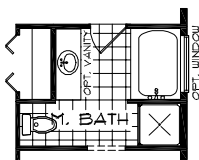
ELEVATION "C"



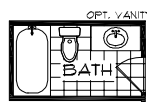
OPT. KITCHEN #1



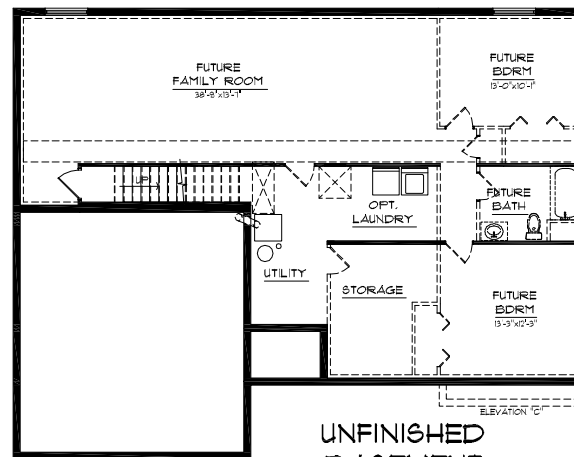
OPT. KITCHEN #2



OPT. M. BATH



OPT. MAIN BATH



COPYRIGHT 2005 KARTCHNER HOMES. THE USE OF THESE PLANS, DRAWINGS, AND RENDERINGS IS EXPRESSLY LIMITED TO KARTCHNER HOMES. RE-USE, REPRODUCTION, OR PUBLICATION BY ANY METHOD, IN WHOLE OR IN PART IS PROHIBITED.

JUNE 18, 2009