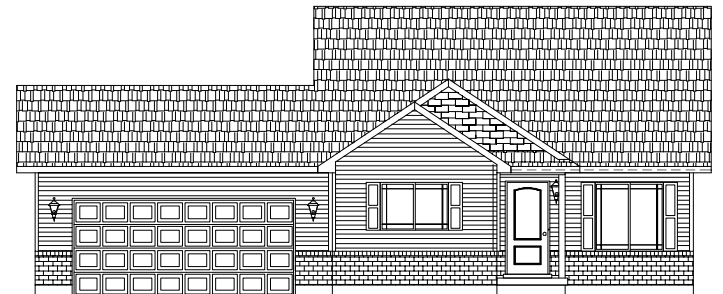
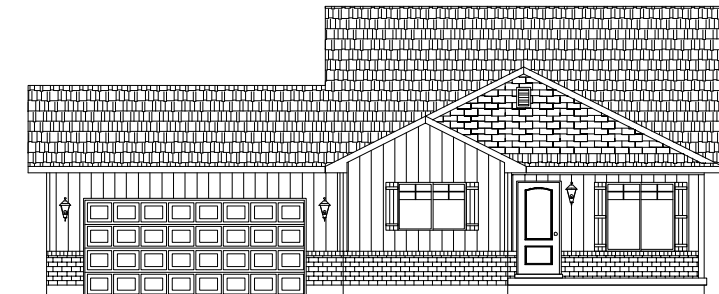


ELEVATION "A"

- 987 Sq. FT. FINISHED
- 510 Sq. FT. UNFINISHED BASEMENT
- 1,497 Sq. FT. TOTAL W/ BASEMENT
- 2 BEDROOMS
- 1 BATH
- 48'-0" WIDE x 40'-0" DEEP



ELEVATION "B"



ELEVATION "C"

