



- 1,196 Sq. FT. FINISHED
- 631 Sq. FT. OPTION UNFINISHED BASEMENT
- 1,827 Sq. FT. TOTAL W/ BASEMENT
- 3 BEDROOMS
- 2 BATH
- 62'-0" WIDE x 31'-6" DEEP

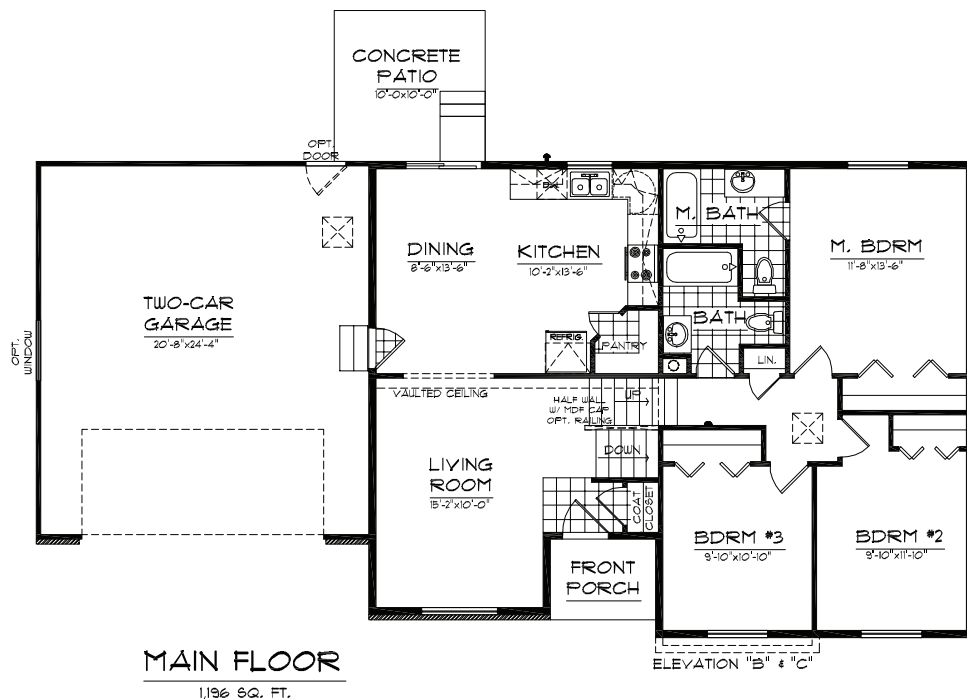
ELEVATION "B"



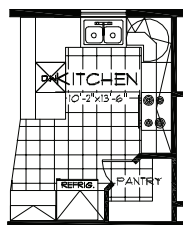
ELEVATION "A"



ELEVATION "C"



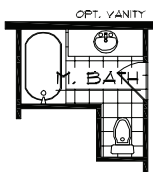
MAIN FLOOR
1,196 SQ. FT.



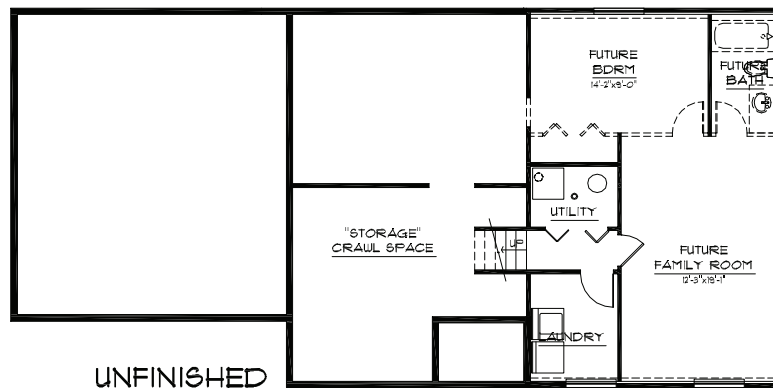
OPT. KITCHEN



OPT. M. BATH



OPT. MAIN BATH



UNFINISHED BASEMENT FLOOR
631 SQ. FT.