



ELEVATION "B"

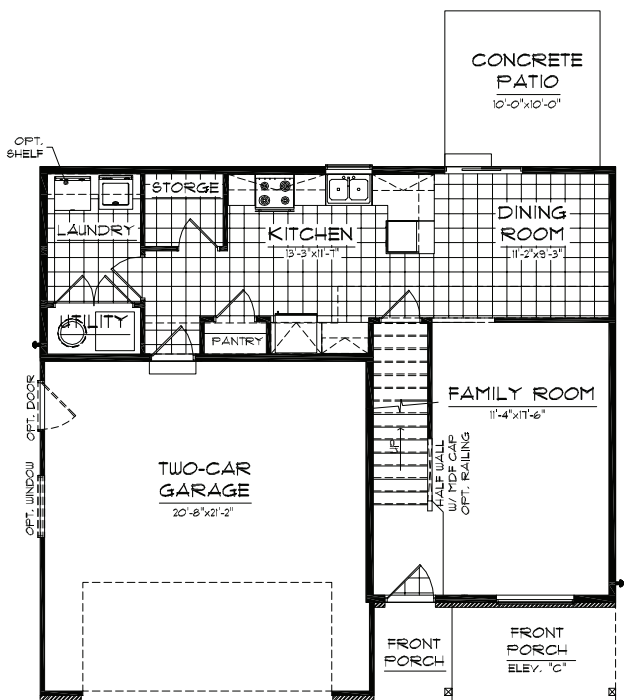
- 1,743 Sq. FT. FINISHED
- 4 BEDROOMS
- 2 BATH, OPTION 1/2 BATH
- 37'-0" WIDE x 34'-4" DEEP



ELEVATION "A"

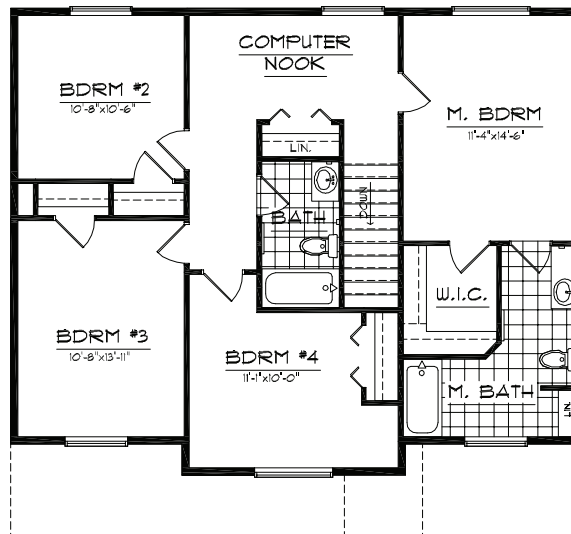


ELEVATION "C"



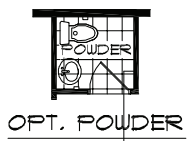
**MAIN FLOOR**

711 SQ. FT.

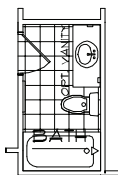


**SECOND FLOOR**

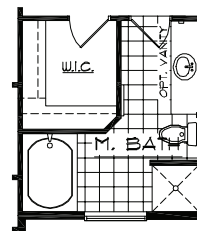
1,032 SQ. FT.



OPT. POWDER



OPT. MAIN BATH



OPT. M. BATH