



- 2,393 Sq. FT. FINISHED
- 1,333 Sq. FT. OPTION UNFINISHED BASEMENT
- 3,726 Sq. FT. TOTAL W/ BASEMENT
- 4 BEDROOMS
- 2 1/2 BATH
- 41'-0" WIDE x 48'-0" DEEP

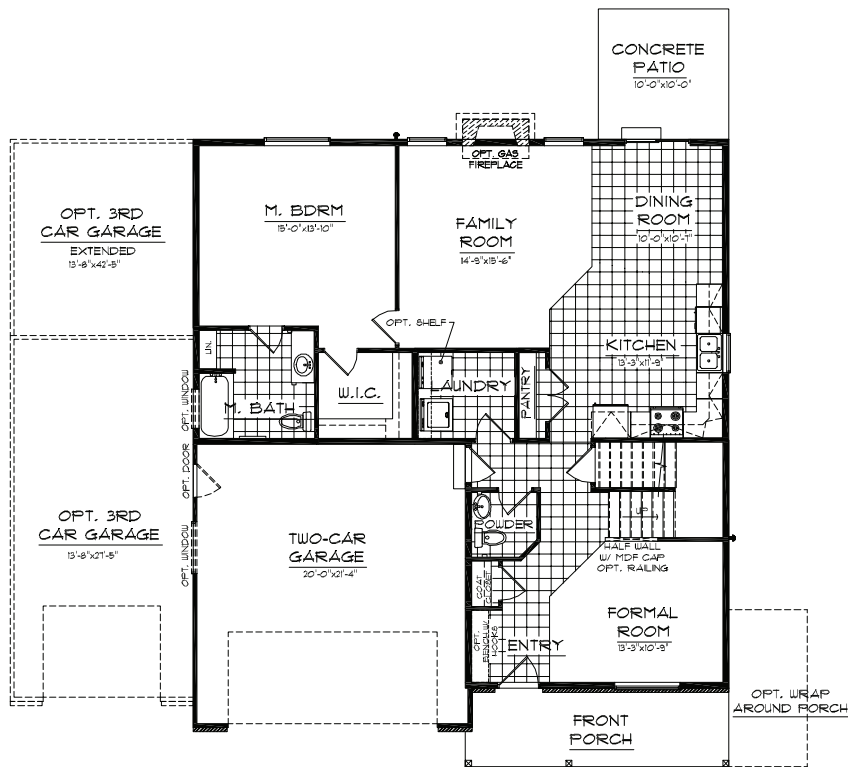
ELEVATION "B"



ELEVATION "A"

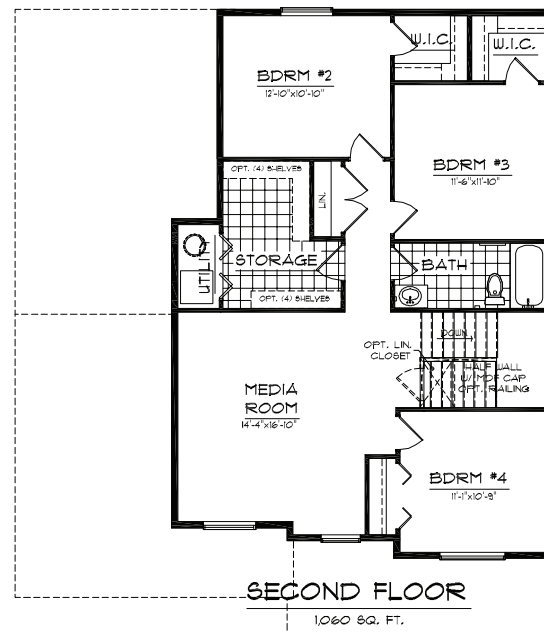


ELEVATION "C"



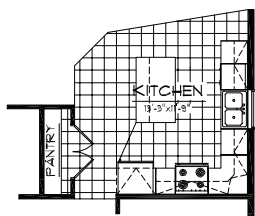
**MAIN FLOOR**

1333 SQ. FT.

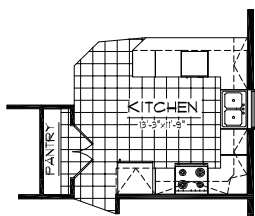


**SECOND FLOOR**

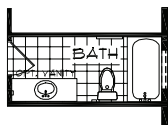
1060 SQ. FT.



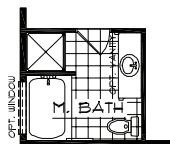
**OPT. KITCHEN #1**



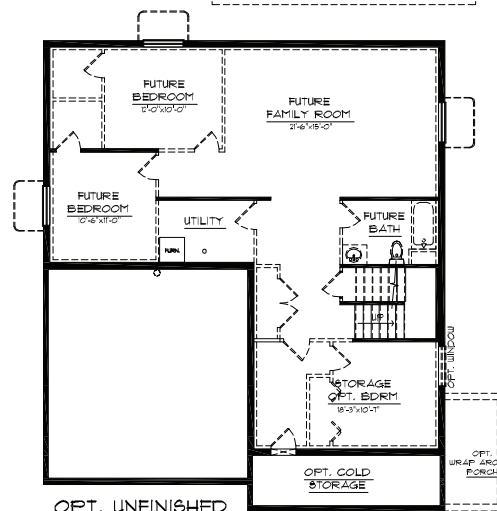
**OPT. KITCHEN #2**



**OPT. MAIN BATH**



**OPT. M. BATH**



**OPT. UNFINISHED BASEMENT FLOOR**

1333 SQ. FT.

COPYRIGHT 2005 KARTCHNER HOMES. THE USE OF THESE PLANS, DRAWINGS, AND RENDERINGS IS EXPRESSLY LIMITED TO KARTCHNER HOMES. RE-USE, REPRODUCTION, OR PUBLICATION BY ANY METHOD, IN WHOLE OR IN PART IS PROHIBITED.

MAY 21, 2008