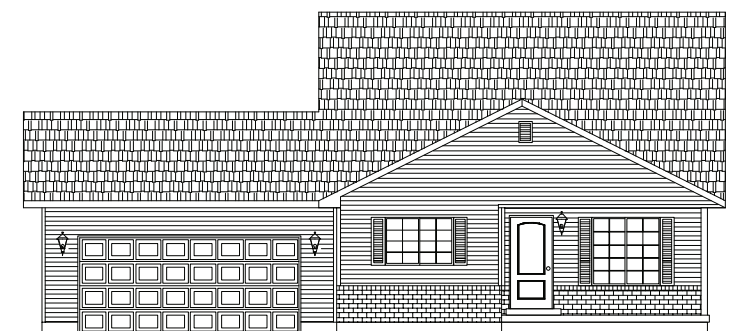
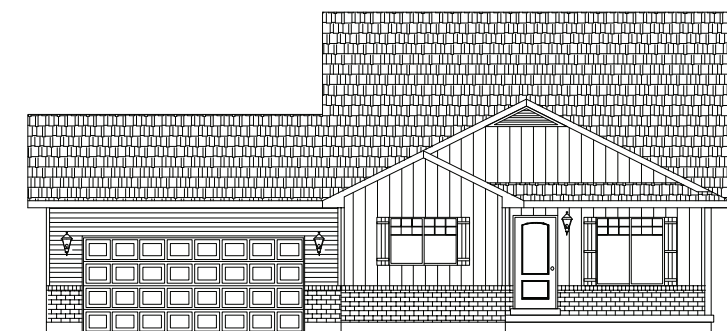


ELEVATION "B"

- 1,059 Sq. FT. FINISHED
- 577 Sq. FT. UNFINISHED BASEMENT
- 1,636 Sq. FT. TOTAL W/ BASEMENT
- 3 BEDROOMS
- 1 BATH
- 48'-6" WIDE x 42'-0" DEEP



ELEVATION "A"



ELEVATION "C"

