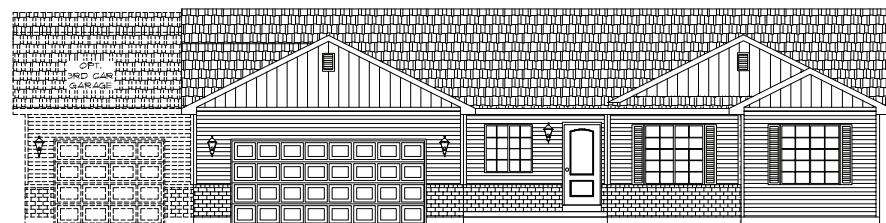
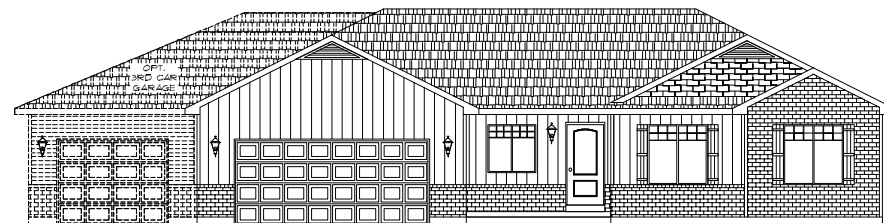


ELEVATION "B"

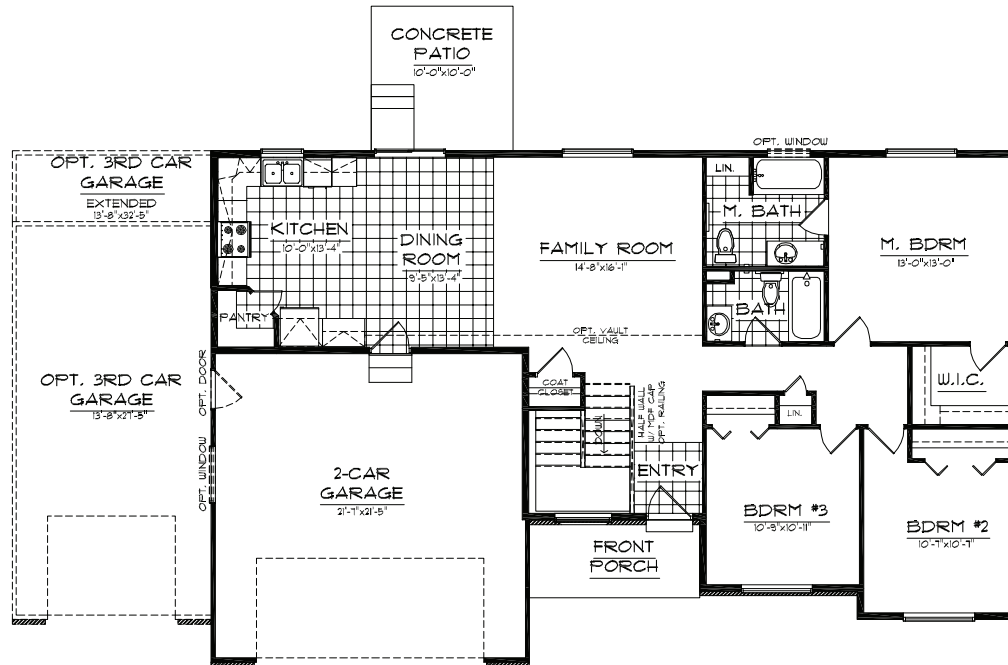
- 1,361 Sq. FT. FINISHED
- 1,338 Sq. FT. UNFINISHED BASEMENT
- 2,699 Sq. FT. TOTAL W/ BASEMENT
- 3 BEDROOMS
- 2 BATH
- 51'-0" WIDE x 36'-4" DEEP



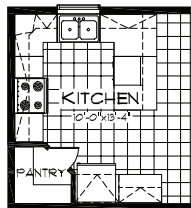
ELEVATION "A"



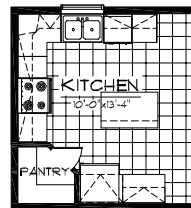
ELEVATION "C"



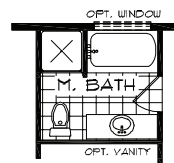
**MAIN FLOOR**  
1361 SQ. FT.



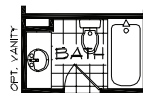
OPT. KITCHEN #1



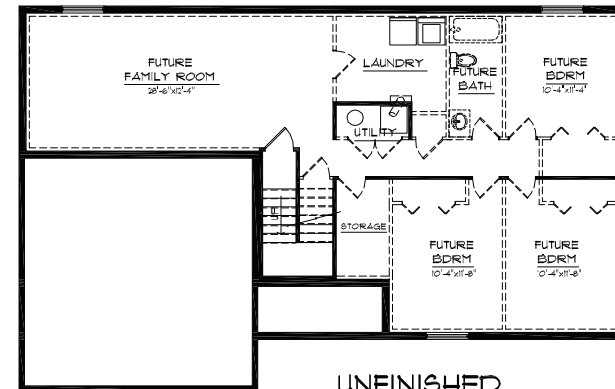
OPT. KITCHEN #2



OPT. M. BATH



OPT. MAIN BATH



**UNFINISHED BASEMENT**  
1338 SQ. FT.

COPYRIGHT 2005 KARTCHNER HOMES. THE USE OF THESE PLANS, DRAWINGS, AND RENDERINGS IS EXPRESSLY LIMITED TO KARTCHNER HOMES. RE-USE, REPRODUCTION, OR PUBLICATION BY ANY METHOD, IN WHOLE OR IN PART IS PROHIBITED.

MAY 21, 2009