



ELEVATION "C"

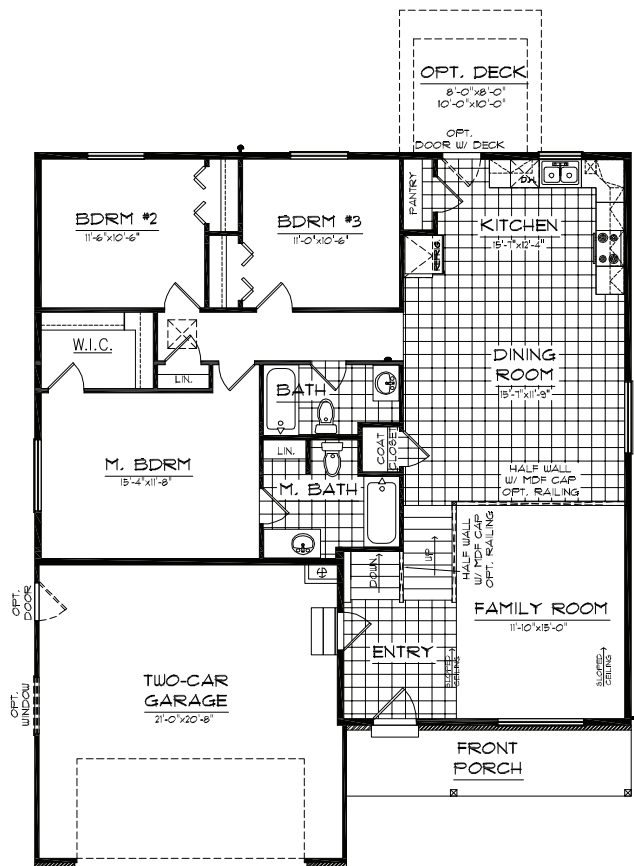
- 1,453 Sq. FT. FINISHED
- 1,137 Sq. FT. UNFINISHED BASEMENT
- 2,590 Sq. FT. TOTAL W/ BASEMENT
- 3 BEDROOMS
- 2 BATH
- 42'-0" WIDE x 50'-9" DEEP



ELEVATION "A"

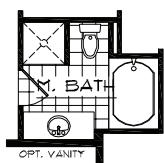


ELEVATION "B"

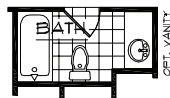


MAIN FLOOR

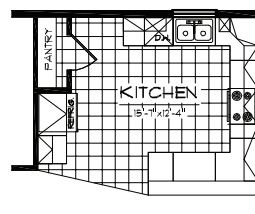
1,453 Sq. FT.



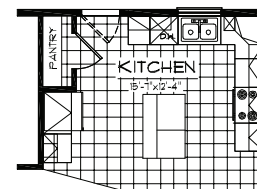
OPT. M. BATH



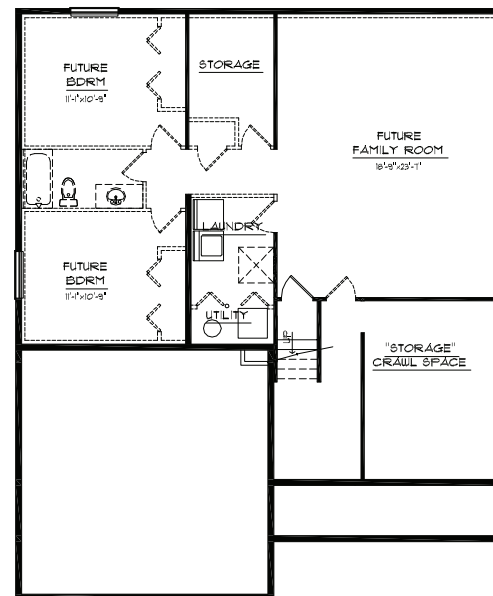
OPT. MAIN BATH



OPT. KITCHEN #1



OPT. KITCHEN #2



UNFINISHED BASEMENT FLOOR

1,131 Sq. FT.